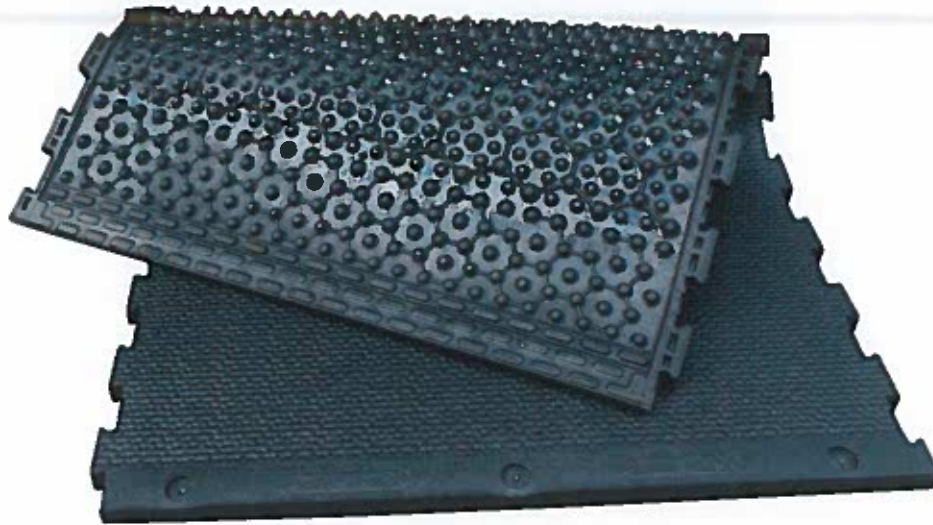


SENTOR Puzzle Mat



Your KRAIBURG dealer:

ALFCO FARM SERVICES LTD.

Newtown, Trim, Co. Meath.

Phone: +353 (0)46 9431740

Fax: +353 (0)46 9436826

Email: info@alfco.ie

Web: www.alfco.ie

- double structured stud profile and different stud heights provide suited softness zones
- very economic for animal comfort
- dimensionally stable and permanently soft
- integrated soft slope to rear edge promotes drying off
- sealing lips on the rear edge of the mat reduce soiling underneath the mat



Softer zone
at the rear
part: specially
for **hock**
joints



With puzzle shaped edges and chamfer
on the rear edge



Dimensions:

thickness: 3 cm

SENTOR Puzzle:

width: 110/120 cm
length: 170/183 cm

Accessories:

ergoBOARD - the flexible brisket board

Installation:

3 fixations / mat*

* Please take notice of the corresponding KRAIBURG installation instructions with useful advice and tips. You will obtain these at your local KRAIBURG dealer or under www.kraiburg-agri.com.

KRAIBURG manufacturer guarantee:

10 years (detailed information is available on request)

Tolerances:

thickness: +3/-2 mm

length/width: +/- 1.5 % (DIN ISO 3302-1 tolerance class M4)

The tolerances also apply within the mat and when installed.

The products presented here should only be used for the mentioned applications. Technical specifications are subject to alterations. All sales are subject to our General Terms and Conditions. Legal basis is the German version of the document.

